

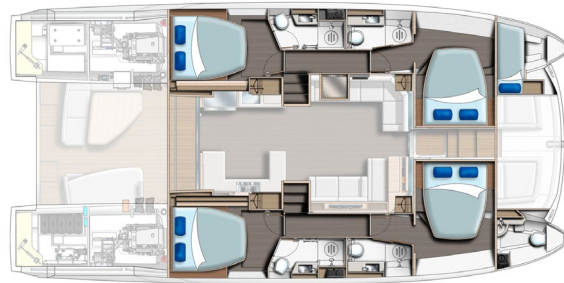


Moorings 534PC

4 cabins / 4 heads

Specifications and Equipment List (Moorings upgrades in bold)

Length Overall (incl. platform):	53ft 1in 16.19m
Length Waterline:	50ft 15.24m
Beam:	25ft 2in 7.67m
Draft:	3ft 2in 1m
Fuel Capacity:	562 US gal 2130 L
Water Capacity:	185 US gal 700L
Engines:	2 x Yanmar 370HP



DECK FITTINGS

- Guard railing (stainless steel)
- 2 x Pushpits (stainless steel)
- 2 x Pulpit seats (port & stbd)
- 1600w vertical windlass 10mm gypsy c/w hand held remote
- Anchor bow roller fitting for primary anchor
- Anchor bow roller fitting for secondary anchor
- Anchor chain stopper
- 1 x Chain locker
- 1 x Anchor/windlass locker
- 2 x Foredeck lockers
- Gas cylinder locker
- Sliding companionway door
- Hardtop over aft cockpit
- L-shaped settee in aft cockpit with cushions and bolster
- Sunbed in aft cockpit with cushions and bolster
- Table in aft cockpit
- Swimming ladder
- Acrylic smoke grey tinted windows
- Hatches:
 - 2 x Size 44 Flush Hatch over cabins
 - 2 x Size 60 Flush Hatch on foredeck (vented)
- Portlights:
 - 8 x Size 1 in hull side and transom
- Foredeck lounging area with watertight saloon access door
- 2 x Forward facing sun loungers
- 4 x Drinks holders
- 2 x Coachroof handrails (stainless steel)
- 2 x Aft hardtop grab handles (stainless steel)
- 1 x 330mm mooring cleat in anchor locker
- 8 x 300mm s/s mooring cleats
- 2 x 310mm pop up mooring cleats
- **Rod holders**
- **Dive bottle rack**
- **Winch type lifting platform with fixed chocks**
- **Stainless steel anchor with galvanised chain**
- **35lb (16kg) anchor with 26ft (8m) chain & 200ft (61m) warp**

Exhibit A

- **Anchor bridle, shackles and hook**
- **Large GRP aft cockpit table in lieu of standard GRP table with folding teak chairs**

FLYBRIDGE

- Helm station console
- Compass at helm position
- Staircase from aft cockpit to flybridge with LED courtesy lighting
- U-shaped upholstered settee
- Sunbed with mattress facing aft
- 4 x Movable backrests
- Wetbar unit with sink and faucet and solid surface worktop
- **Refrigerator in Flybridge Wetbar - 12V**
- **Electric grill on flybridge wetbar**
- Life raft locker
- Stowage locker in wetbar
- Central fixed cocktail table with drink holder recess
- Guard railing around aft section of flybridge (stainless steel)
- Acrylic windscreen around fwd section of flybridge
- **Forward wind and spray shield**
- Hardtop over flybridge
- Hardtop supports
- Overhead lighting

SALON

- **Silvertex "Macadamia" upholstery**
- Wear resistant laminate flooring
- Upholstered pouf and overlay table
- L-shaped settee
- Settee - two seater
- LED overhead lighting
- Stowage space under stbd settee and Helm seat
- Front doorway access to foredeck
- **Interior saloon blinds - front & side windows**

GALLEY

- Solid surface worktop
- Single lever mixer faucet with pull out sprayer
- Single stainless steel sink
- Dish and cutlery drying recess with drainage
- Double door domestic fridge
- 4-burner gas hob
- Combination convection oven and microwave
- Gas solenoid shut-off valve with control at MFD & warning light at cooker
- Gas detectors in each hull connected to alarm in saloon
- Gas cylinder regulator in dedicated LPG locker
- Carbon monoxide detector / alarm
- Separate garbage bin locker
- Stowage space in shelf lockers
- Spice rack
- 3 x Galley drawers
- 2 x Pot storage drawers
- Smoke detector / alarm
- **Dishwasher**

INTERNAL HELM STATION

- **Internal Steering Steering Station upgrade**
- Backrest s/s railing
- Storage below helm seat

CABINS x 4

- Laminate finishes
- Queen size berth (2025mm x 1720mm or 80" x 68")
- Bedside tables
- Headboard
- Hanging locker with lower shelf
- LED overhead lighting
- LED reading lamps
- Overhead roller blinds for privacy
- Large open shelves
- Stowage drawers under bunk
- Large hull window incorporating portlight and blackout blind
- Transom windows with blackout blind (aft cabins only)
- Carbon monoxide detector / alarm
- Smoke detector
- **Full length mirrors**
- **Ventilation fans in cabins**

HEADS COMPARTMENTS x 4

- Washbasin with basin mixer and solid surface worktop
- Vanity locker with mirror
- Towel rail
- Shower area with lever mixer and adjustable shower rose
- Shower sump with automatic drainage
- LED Overhead lighting
- Overhead roller blinds for privacy
- Hull window with slatted blind
- **Electric flushing toilets (salt and fresh water flush) in lieu of electric salt water flushing toilets**

FOREPEAK BERTH AND HEADS

- **Port forepeak includes mattress, A/C electric outlet, USB ports, Fire Extinguisher, Air Conditioning**
- **Starboard forepeak includes basin with faucet & mirror, electric heads with dedicated holding tank, Shower with automatic sump drain**
- Access from deck hatches

ENGINES & CONTROLS

- Double lever throttle / gearshift control
- Sound deadening panels in engine room
- Smoke detector
- 2 x Engine room ventilation fans and ducting
- 2 x Yanmar 370hp engines
- 2 x Propellers - 4-blade fixed
- 2 x Fuel deck fillers
- 2 x Fuel filter / water separators
- 2 x Fuel tanks 562USgal / 2130Ltr total capacity
- 2 x Exhaust skin fittings (stainless steel)
- 2 x Exhaust water locks
- 2 x Cooling water inlet strainers
- 2 x Exhaust cooling water temperature sensors with audible alarms at helm
- 2 x Moisture eliminating grilles
- **Bow thruster**

ELECTRICAL INSTALLATION

- Digital switching facilities for 12v equipment
- 3000W 220V Inverter for convection microwave oven
- 1200W 220V Inverter for refrigerator
- LED Courtesy lights at stairways, flybridge, aft cockpit and fwd cockpit
- LED Bi-colour & stern navlights
- 1 x 12v outlet socket at helm station
- 1 x Double USB socket at helm station

Exhibit A

- 1 x Double USB socket at internal helm
- 1 x USB socket integrated in reading light in aft cabins
- 1 x Magnetic mobile phone charger in saloon
- House batteries
- **Increased battery capacity and AGM batteries in lieu of standard**
- Engine starter batteries
- 1 x Remote house battery isolator switch
- 2 x Engine starter battery isolator switches
- 2 x Alternators, standard with engines
- 1 x Electrical spares kit: fuses, relays, fuse holders
- 1 x Electric fog horn with control at helm station
- **Battery charger**
- **Link engine starter batteries to house batterie**
- **Stereo system with interior and exterior speakers**
- **Full Raymarine electronic package**
- **Forward-facing camera**
- **Rear-view camera**
- **Generator**
- **Chilled Water Air Conditioning**
- **Watermaker**
- **TV**
- **Solar panels**
- **Underwater lights**
- **Fans in the cabins**
- **Shore power pack**
- **3000W inverter**
- **Digital switching**

PLUMBING INSTALLATION

- Hot and cold pressurized fresh water system consisting of:
 - 2 x Water tanks, 185USgal / 700ltr total capacity with level reading and gauges
 - 2 x Fresh water pressure pump with accumulator tank
 - 2 x Hot water cylinders 6USgal / 23ltr total capacity
- **Stern shower: Hot/cold water**
- **Deck wash fitting & pump**
- 4 x Automatic shower drain pumps
- Holding tanks, 45USgal / 170ltr total capacity
- 2 x Electric bilge pumps (keel sump) with float switches and alarm at switch panel
- 2 x Manual bilge pumps
- 2 x High water bilge float switches with alarm at switch panel
- 2 x Electric bilge pumps (engine room) with flat switch and warning light at switch panel
- Freshwater connection
- Water purifying filter system
- **Watermaker**

RUDDER & STEERING SYSTEM

- Balanced spade rudders in stainless steel
- Rudder stock in stainless steel
- Bearings with fibreglass rudder tube
- Hydraulic steering system
- Soft-grip steering wheel

GENERAL EQUIPMENT

- **Mooring / dock lines / fenders**
- **Safety pack**
- **Charter pack**
- **Commissioning and delivery to charter base**

NOTE

The Builder reserves the right to change or amend the contents of this document at any time without prior notification to any third party, and no liability will be accepted for errors contained within the same.